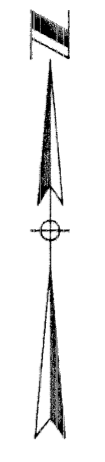
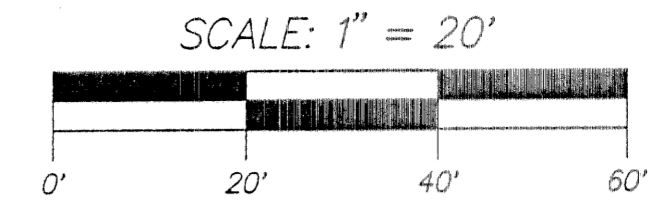


ATLANTIC GROVE

BEING A REPLAT OF A PORTION OF BLOCK 28, TOWN OF LINTON (NOW DELRAY BEACH),
PLAT BOOK 1, PAGE 3 (SHEET 2) AND A PORTION OF BLOCK 36, REVISED PLAT OF BLOCK
36, PLAT BOOK 5, PAGE 38, SECTION 17, TOWNSHIP 46 SOUTH, RANGE 43 EAST, CITY
OF DELRAY BEACH, PALM BEACH COUNTY, FLORIDA.

JANUARY 2002
SHEET 4 OF 4

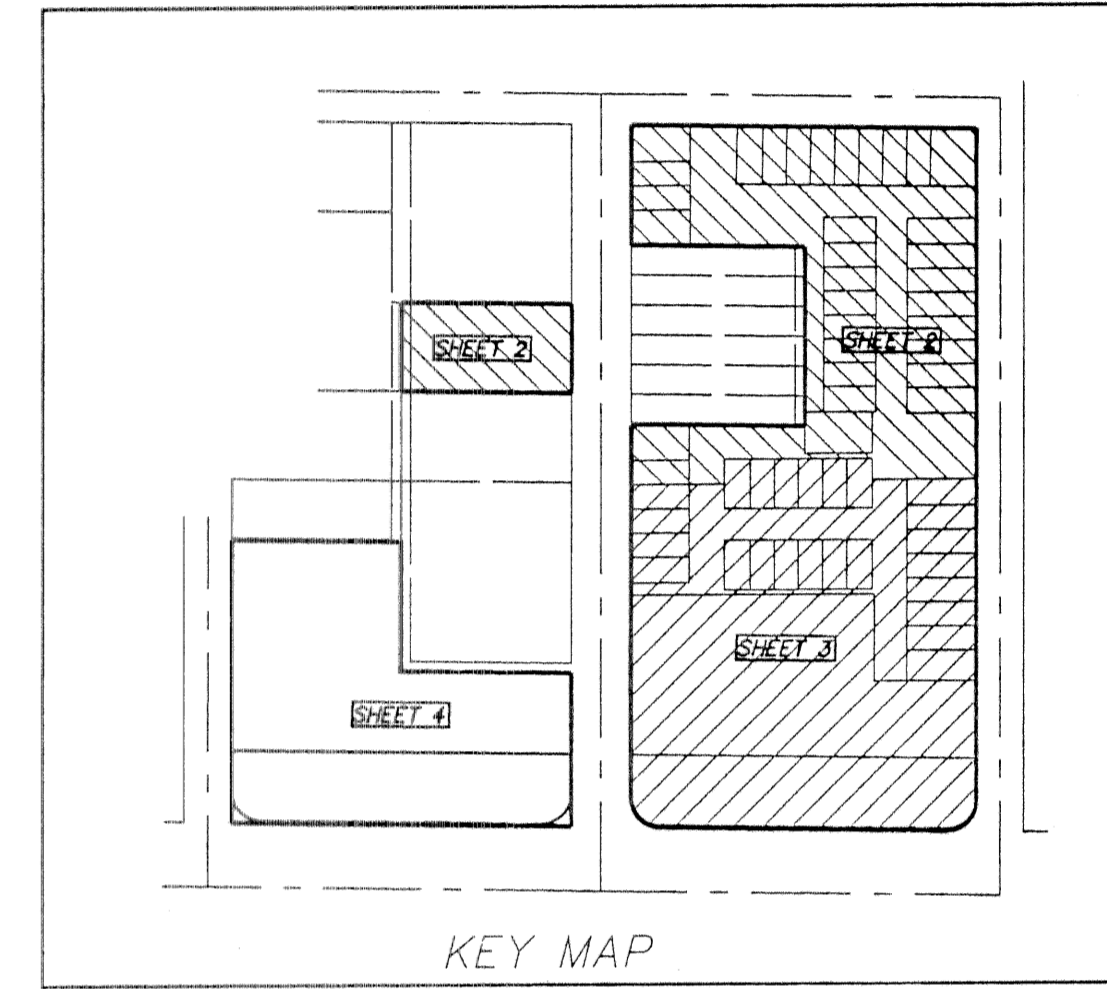
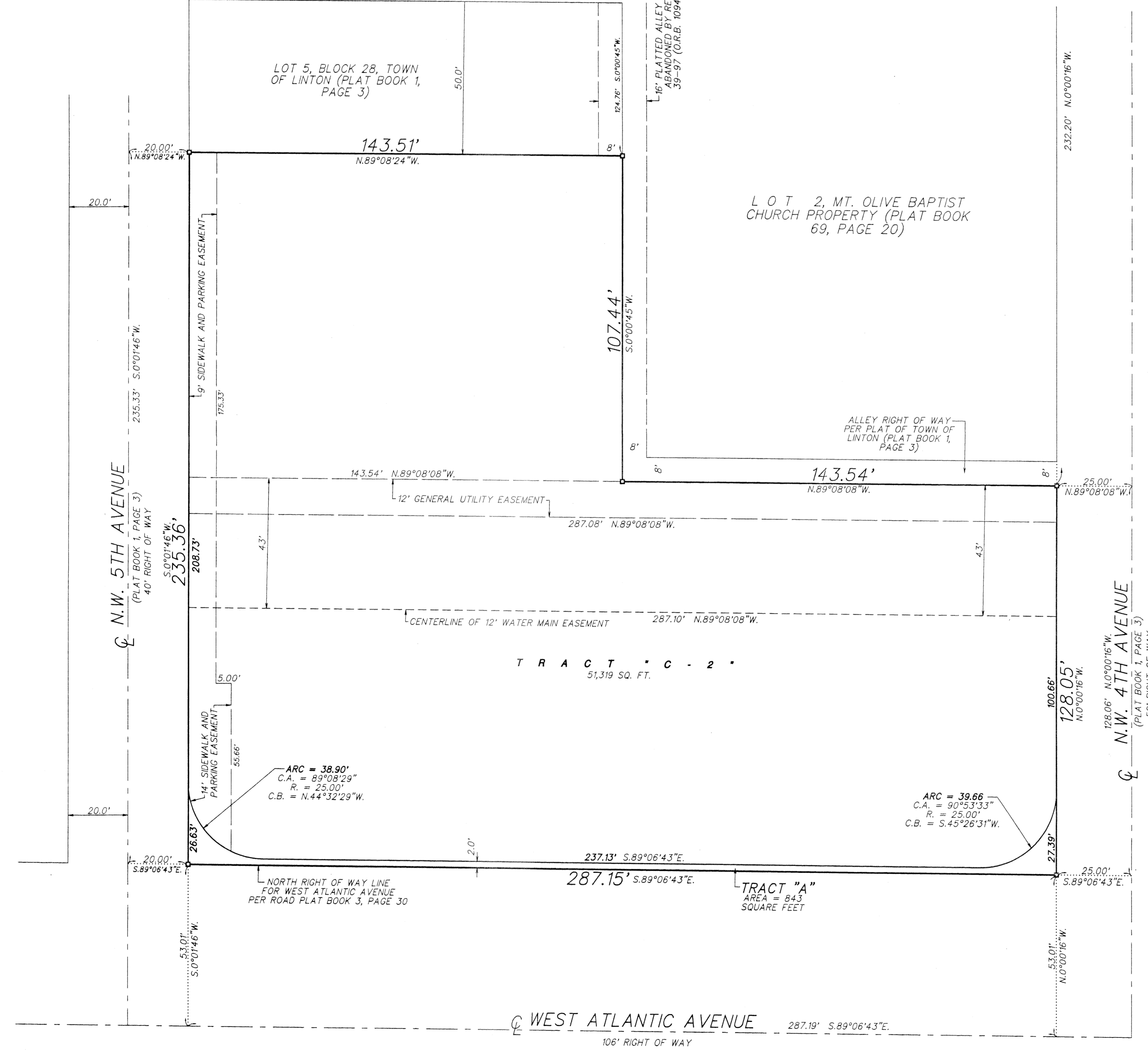
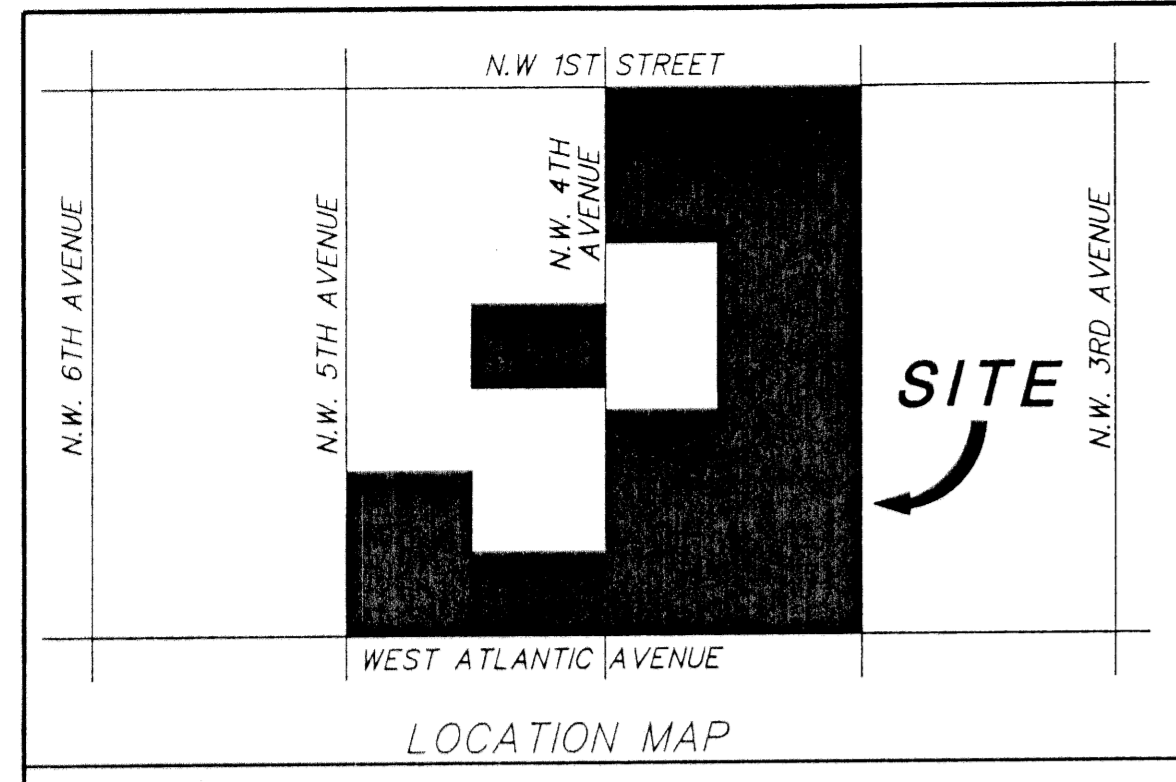


LEGEND:

- ⊙ = CENTERLINE
- = PERMANENT REFERENCE MONUMENT (4"X4" CONCRETE MONUMENT STAMPED "OSO 353")
- C.A. = CENTRAL ANGLE
- C.B. = CHORD BEARING
- O.R.B. = OFFICIAL RECORD BOOK
- R. = RADIUS
- = NON-VEHICULAR LINE (N.V.L.)
- SQ.FT. = SQUARE FEET

COUNTY OF PALM BEACH
STATE OF FLORIDA

THIS PLAT WAS FILED FOR RECORD AT _____
THIS _____ DAY OF _____
20____, AND DULY RECORDED IN PLAT BOOK NO. _____
ON PAGE _____
DOROTHY H. WILKEN, CLERK OF CIRCUIT COURT
BY _____ D.C.



THIS INSTRUMENT WAS PREPARED BY PAUL D. ENGLE, IN THE OFFICE OF
O'BRIEN, SUITER & O'BRIEN, INC., 2601 NORTH FEDERAL HIGHWAY, DELRAY
BEACH, FLORIDA 33483
(561) 276-4501